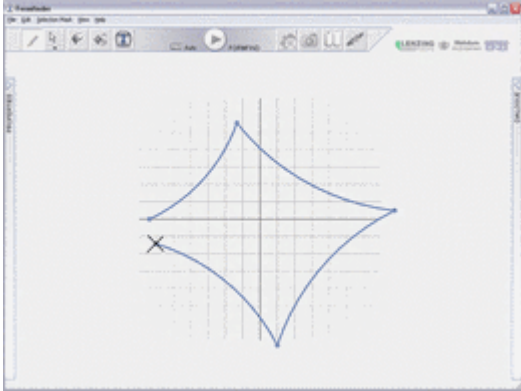


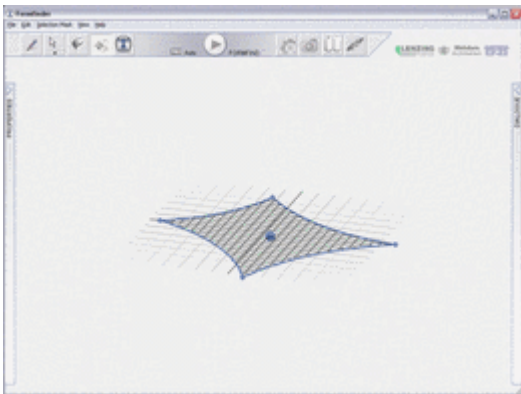
Formfinder work flow

This presentation focuses on the creation of a Four-Point Tent and a funnel umbrella.



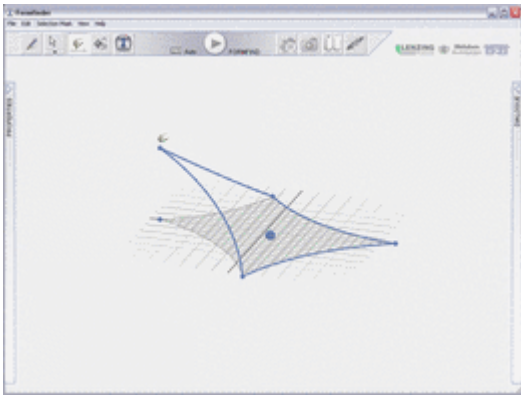
1.
Let's start with the pen.

Clicking on the area creates fixed points. The automatically generated border has a curvature of 10%.



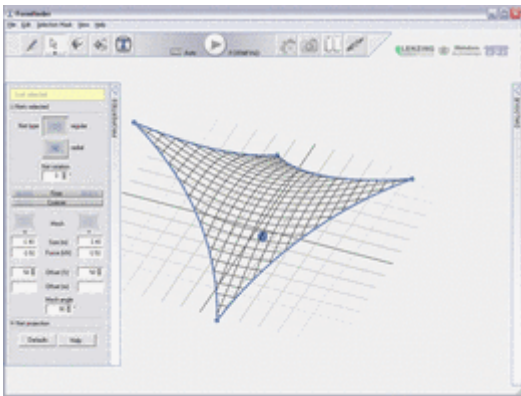
2.
On closing the polyline the net is generated.

To rotate the view select ORBIT in the toolbar or press Alt key + middle mouse button.

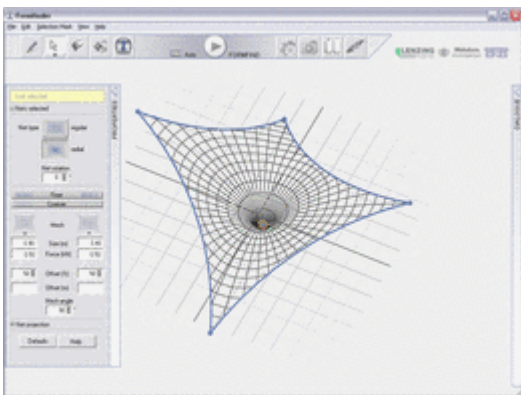


3.
To select any element of the Geometry use the HAND from the toolbar.

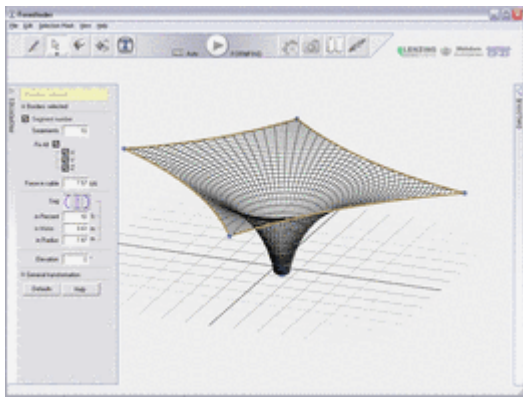
Creating a spatial model is done by lifting fixed-points on pressing the Ctrl (Strg.) key.



4.
Changing net properties is easy done on using the "selection tool" from the toolbar. The Properties Panel is opened and closed by clicking on the Properties bar.



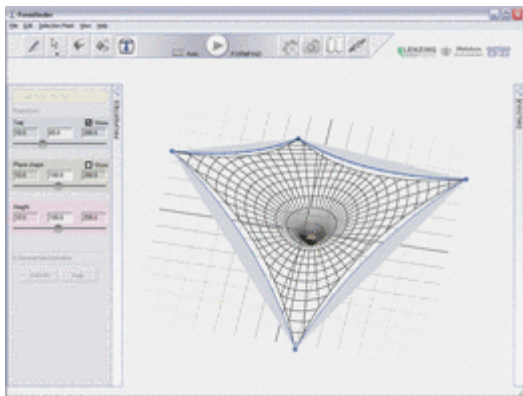
5.
Our example was transformed from a regular net to a radial net simply on clicking on the radial button in the Properties Panel.



6.

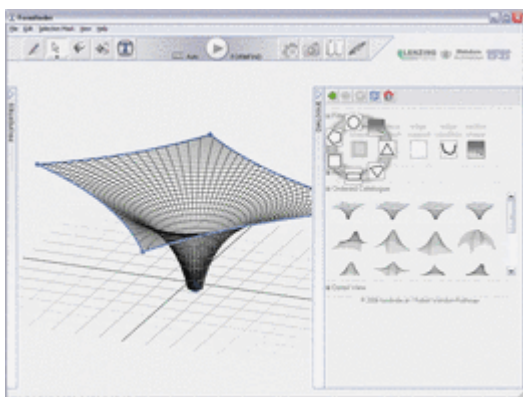
As soon as an Element in the viewport is selected, the Properties Panel offers additional dialogues to adjust the geometry.

To spatially rotate a border click Ctrl (Strg) key and the Mousebutton.



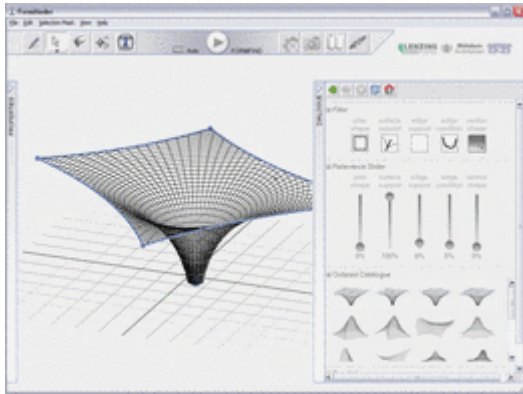
7.

The heart of the Properties Panel is the Proportion (Icon "Leonardo Boy" from the toolbar).

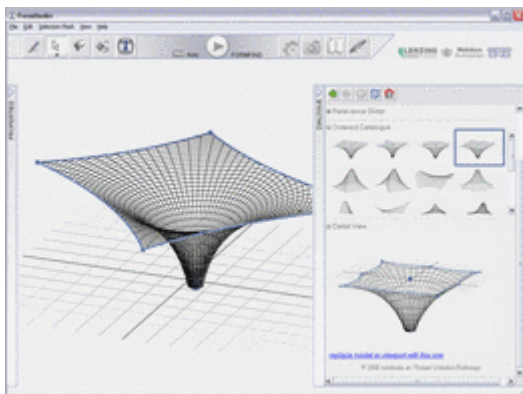


8.
Now let's change from the "design entry" to the "design analysis".

Select the radial icon in the toolbar to start the integrated object recognition to find the most appropriate geometry in the Typology database.

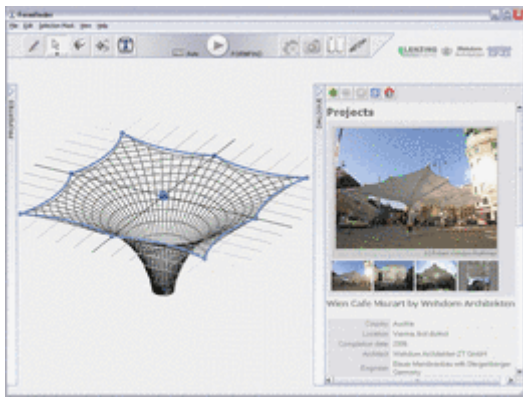


9.
The result can also be adjusted on using the Relevance Slider.



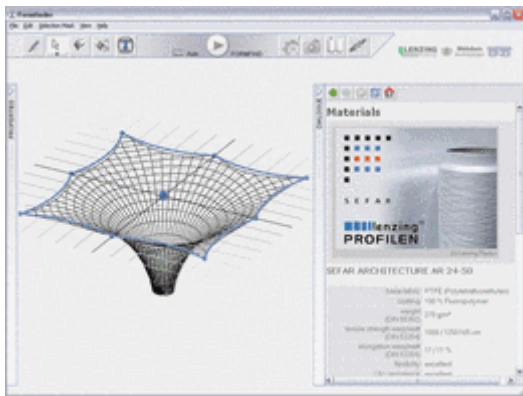
10.
Don't be ashamed if you find a similar structure!

It is on one hand nice to know, what has already been designed and on the other hand the development must go on.

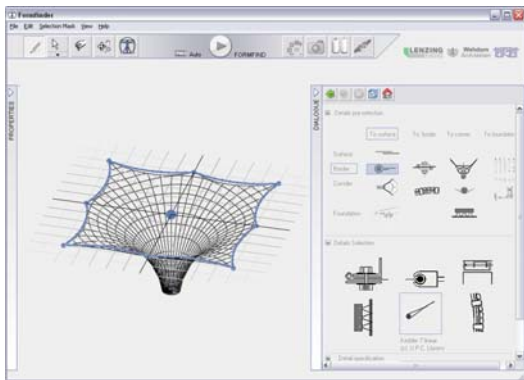


11.
The Typology opens the way to the "Formfinder treasure chest".

A fine selection of built projects should open the designers view on the diversity and beauty of form-active structures.



12.
The material database offers a selection of "architectural textiles".



The selection of detail drawings should inspire to develop new solutions.

FORMFINDER is a design software that is as easy to operate as a sheet of paper and a pencil.

The upcoming Formfinder Professional will be able to implement automatically optimised steel structures. Then the implementation of a Solar-Tool will visualise the shape of the designed structure under the condition of time.

Whatever is done with Formfinder, the designer should be able to express the aim and to do it with passion!